



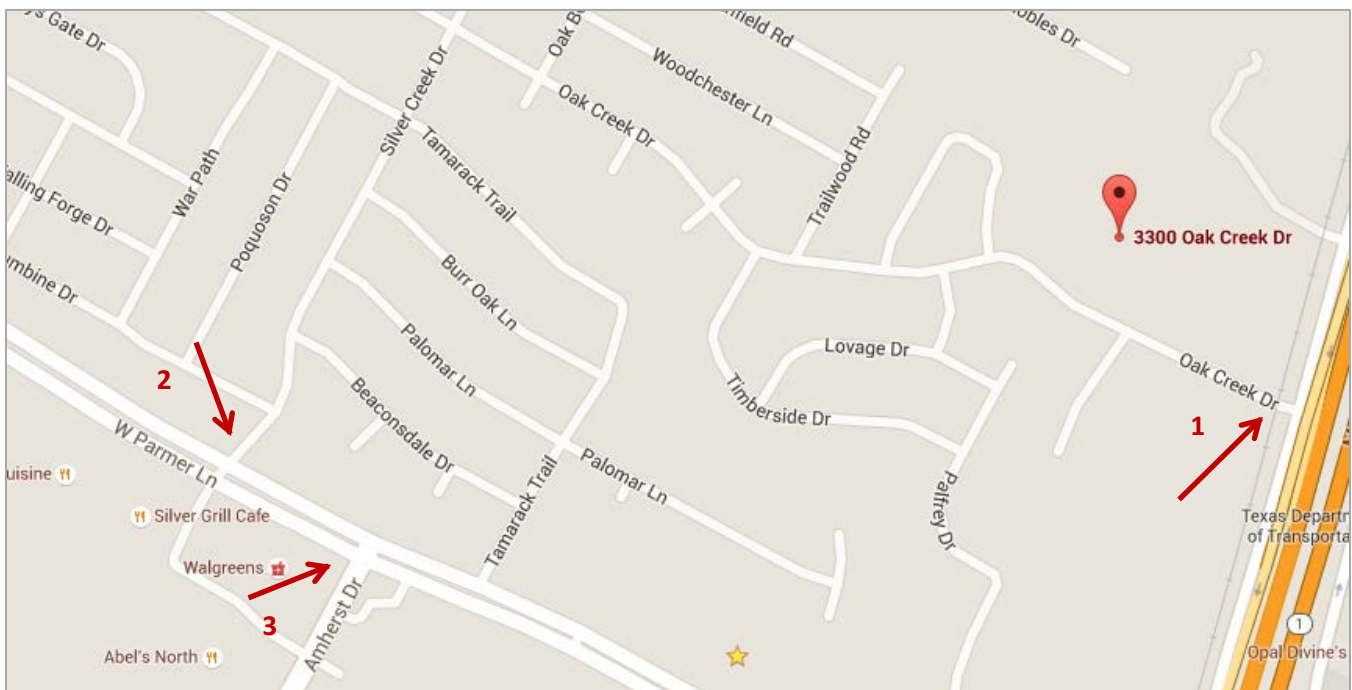
This corner of Parmer/MoPac only has nearly 900 homes and 2 usable streets – Oak Creek Dr. (1). and Silver Creek Dr.(2) - for ingress/egress. Oak Creek exits at the SB MoPac frontage road with a speed limit of 60 MPH and no traffic light; Silver Creek has a traffic light as it exits onto Parmer Lane, a 6 lane divided highway with the speed limit of 55 – 60 MPH. On both roads drivers often travel faster than those speeds. And as more people move further north on MoPac and west on Parmer traffic will become even heavier, making it even more challenging to enter and exit this corner of these busy streets. Apartment residents will have to share Oak Creek and Silver Creek with the existing residents... and even more dangerous for our young drivers.

Other important facts:

Silver Creek is only about 400 feet west of the next traffic light at Amherst (3). During rush hour, because of numerous vehicles already on Parmer stopped at that light, often vehicles attempting to exit Silver Creek towards MoPac cannot complete the turn and may block the intersection. Additionally

- although Silver Creek has 2 lanes to exit, only one is designated as left turn lane. It is not uncommon for drivers in the right lane, which is designated as straight or right turn only, to also turn left and risk a collision.
- drivers turning left must also deal with traffic exiting the commercial area directly south of Parmer – coffee shops, restaurants, bank, doctor offices, a drug store and more. Silver Creek is their only direct exit with a light.

If Oak Creek becomes unusable for any reason – such as during flooding or after flooding due to road damage from high water – Silver Creek will be unable to handle all of the current traffic from the nearly 900 homes in this corner of Parmer/MoPac.



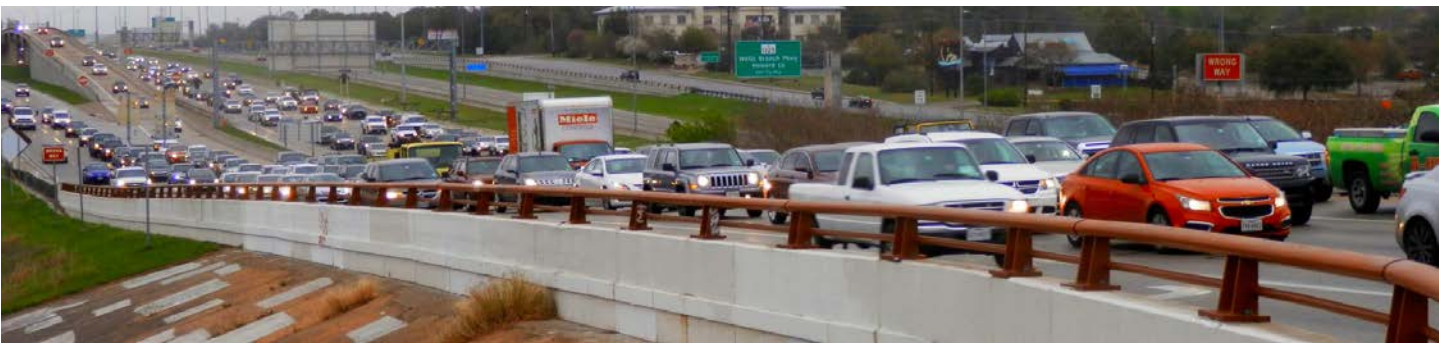


**Oak Creek exit**

Typical Morning Traffic for drivers using Oak Creek; many SB vehicles exit MoPac to the frontage road to turn left onto Parmer towards IH 35. It can take 3-5 cycles of the light to get through this intersection.



From Parmer looking north; Oak Creek is just north of this photo's left edge.



Pedestrians must walk directly next to the traffic with no protective fence to shield them from a vehicle that could easily jump the curb. Note the guard rail damage.





Afternoon photo of frontage road and Oak Creek– the Railroad Crossing for light rail forces vehicles to stop on the 2 lane frontage road, risking being rear ended by oncoming high speed traffic.



Exiting Oak Creek, it can be difficult to see oncoming vehicles that move at high speeds due to the slope of Oak Creek and often high grass





Typical Silver Creek morning traffic waiting to exit on Parmer Ln. It often takes 2 or more cycles to get through the intersection; additional vehicles from the apartments will only increase this.



Note the black trailer; it barely made the light but wasn't able to fully clear the intersection. Traffic is again backed up following it.





The view from Parmer – during rush hour it is already packed with eastbound vehicles headed towards MoPac either from Parmer or via Amherst to Duval, to Summitt Elementary (on Amherst) and IH-35. The traffic lights at Amherst and Silver Creek are timed to keep traffic on Parmer moving, but the number of eastbound Parmer vehicles don't allow for many vehicles exiting Silver Creek to turn onto Parmer, especially into the right lane to reach Amherst or SB MoPac.



Silver Creek just turned green; no room in the right lane (many vehicles exiting Silver Creek turn into this lane).

As the Silver Creek light turns yellow, the bus finally makes onto Parmer in the right turn lane, headed to Summitt.



Note the two vehicles after the bus must use the shoulder to clear the intersection.

